



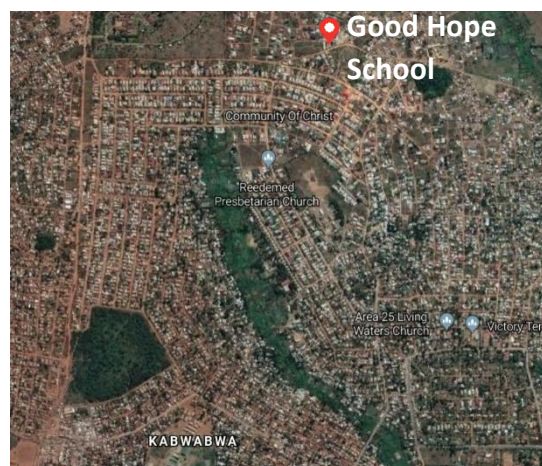
Post-Trip Report 2018

In 2018, Aidan Crowson took over from Joe McDermott as the chief fundraiser for Educate Africa to raise money for the Good Hope School in Area 25 of Lilongwe, Malawi. Along with the support of his family and the amazing generosity of many donors, he successfully raised an amazing £6597.92, smashing his original target of £6000!

During my Year 10 work experience week from the **30th June – 8th July 2018**, my dad Richard and I visited the Good Hope School. Our aim was to visit the school in order to meet the teachers and students, find out more about life at the school and in Lilongwe, and discover further needs the school has. We stayed with the school's director Brian Mari in order to fully immerse ourselves in the lifestyle and culture.

In this report I will be covering what we have learnt during the trip, how the money fundraised this year will be spent, and what needs the school has for Educate Africa to fundraise for in the future.

Where is the Good Hope School?



Life in Area 25, Lilongwe

Area 25 is located on the northern outskirts and about a 30 minutes' drive from the city centre. In Lilongwe suburbs are numbered in order of their development rather than geographical location. Much of this suburb is unplanned, and most of the roads are potholed, untarmacked dirt roads without names or street numbers. Houses in the main are built from locally fired handmade bricks with tin roofs. Most of the more established houses are in walled compounds and piped water and electricity covers portions of the suburb. There is no planned sewerage – and most toilets are in the form of outdoor pit latrines – although more affluent houses may have a western style flushing toilet. More deprived houses will be smaller and may have thatched roofs and be unfenced.

People mostly get around by foot, bike taxis or for further distances – for example into town – there are lots of minibuses, which are meant to sit 8 or 9 at most but often cram as many people into them as possible – many up to 15!

The area is very resource-poor and the electricity and water supplies are unreliable. Most houses will have dug their own shallow well – these are brick lined 2-foot diameter and may be 4-5 m deep. There is a lot of plastic waste around on the ground and the air is polluted in parts of the city. This is partly due to the fact that many people cook on charcoal.



A charcoal seller pushes his bike, laden high with bundles of charcoal, along the road



Cooking eggs on a charcoal stove



A charcoal stove commonly used in Area 25



A typical image of what Area 25's streets and houses look like



The streets of Area 25, Lilongwe



Small roadside shops like these are very common throughout Area 25 and the rest of Lilongwe and offer cheap, everyday grocery items



Goats are often seen wandering around on the sides of roads.



Buying sugar cane from roadside sellers; it is a favourite in Malawi. You chew on it to extract its sweet juices and then spit out the pith afterwards.

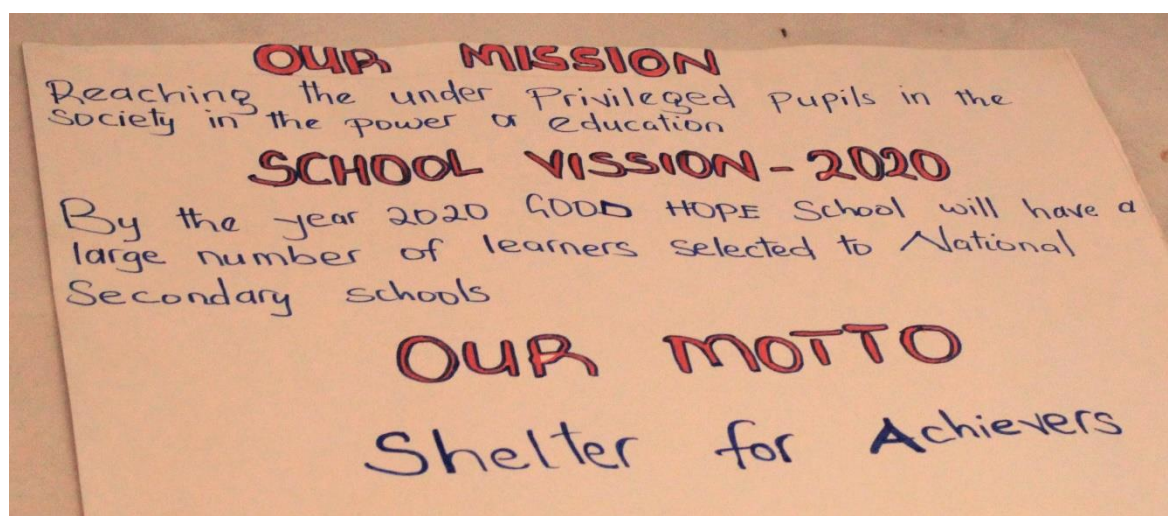


We went to watch the football team sponsored by Reaper Ministries and Brian Mari play a match against another Lilongwe team; they won 7-1!

The School

Malawian primary school lasts from Standards 1-8 and children start Std 1 from age 6. At the end of each academic year everyone sits exams and they have to pass these in order to progress on to the next standard. Many children start primary school a few years later and sometimes fail their annual exams, which means that some of the students in standards 7 or 8 are often as old as 17 or 18. The curriculum is the same throughout the whole of primary school: subjects include English, Chichewa (Malawi's national language), Maths, Science, Religion, Social Studies (geography) and Expressive Arts (a combination of dance, music and poetry).

Good Hope School offers an education for some of the poorest, most underprivileged children in Area 25 and some surrounding areas. Many of these children are orphans and some are even HIV positive. Many of the students come to school barefoot.



Good Hope School has 8 classrooms split into 2 main blocks and one smaller block containing just one classroom, with toilets around the back of the compound. The school has 650-700 pupils with 16 teachers (2 per class) and one headteacher. The classes are unevenly sized so whilst the older standards have less students, some of the younger classes such as Standards 1 & 2 have up to 100 pupils. Although each class has 2 teachers, they take turns teaching lessons and preparing the next one so there is only one teacher for the whole class at one time.

The school grounds are small and unfenced: children will wander onto the adjacent streets during their breaktimes. There are 1m high hedges at the front of the school but the rest of it is open. The classrooms are in a very bad state of disrepair with lots of deep potholes in the floor and bare, dirty concrete walls. Windows and door frames are poorly fitting and several of the classrooms do not have doors. This has led to an increased level of theft of exercise books and other equipment from the school over the years, so the school now has very little learning materials.

This table shows enrolment at Good Hope School in the month of May 2018:

	Std 1	Std 2	Std 3	Std 4	Std 5	Std 6	Std 7	Std 8	Total
Male	35	93	58	56	31	34	29	20	356
Female	29	64	68	55	38	31	36	18	339
Total	64	157	126	111	69	65	65	38	695

An aerial view of the Good Hope School



Standard 8 classroom

Boys' Toilets

Girls' Toilets

Main Block 2 containing head's office, director's office and Standards 5-7 classrooms

Main Block 1 containing Standards 1-4 classrooms and 2 teachers' offices

Small yard/playing area

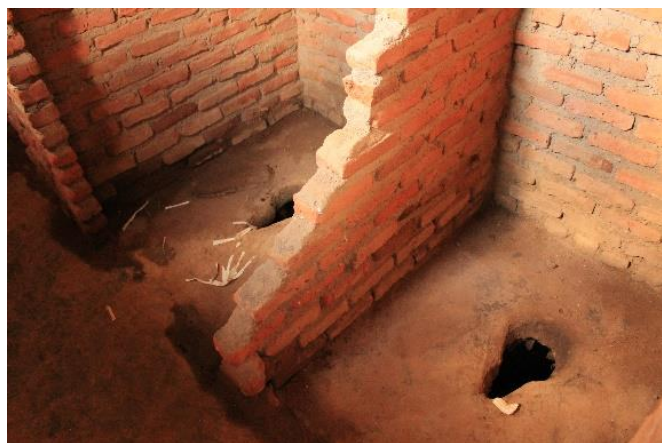
School boundary: every side is open apart from these hedges on the front side next to the road



The Good Hope School's front yard, with Main Block 1 on the left and Main Block 2 behind the entrance sign



Main Block 1 contains Standards 1-4



The toilets are simply long drops



The start of a perimeter wall at the back of the school; the money from this year will go towards completing this on all sides of the compound



Many of the floors are covered in potholes like this



An example of the school's dirty, pockmarked walls



Standard 2 had 157 pupils recorded in May 2018



As part of our visit to the school we taught Standard 7 about latitudes & longitudes using the 2 globes we had bought from England for the school



The school rules are painted on a large stone outside in the yard



Judith, the school's headmistress



The school's well and water pump



Whole school assembly outside in the school yard



Us with Brian Mari (the school's director) standing outside the classroom that Joe funded last year

What will the fundraised money from this year go towards?

After visiting the school and talking to the teachers and headteacher, these are the most important things that we think the £6500 should go towards:

- **Security & safety:** perimeter wall, new doors for some of the classrooms and offices
- **Improved learning environment:** redecorating the walls and floors, providing integrated double desks & benches for classrooms
- **Educational resources:** exercise books, chalkboard sets including chalk & rubbers

The school's other requests

These are some of the other things that were requested at the school:

- Storeroom for books and other equipment
- Changing sanitary room for older girls as they currently don't have a clean, private room to do this in
- Roofs for the toilets

Construction and refurbishment at the school will begin soon and Reaper Ministries will be providing further information and assurance on the use of these funds.

We will be hoping that the Educate Africa project will be continued next year... keep an eye out on the website for further news about who this will be!

Now all that's left to say is a massive...



THANK YOU

For your support this year!